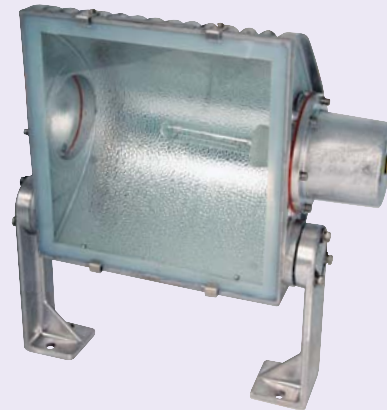




600W HPS



1000W Tungsten Halogen

The 503 is a high powered floodlight with a wide ambient temperature range. The high upper ambient and corrosion resistant aluminium construction, make the 503 ideal for use even in the hottest and hostile environments.

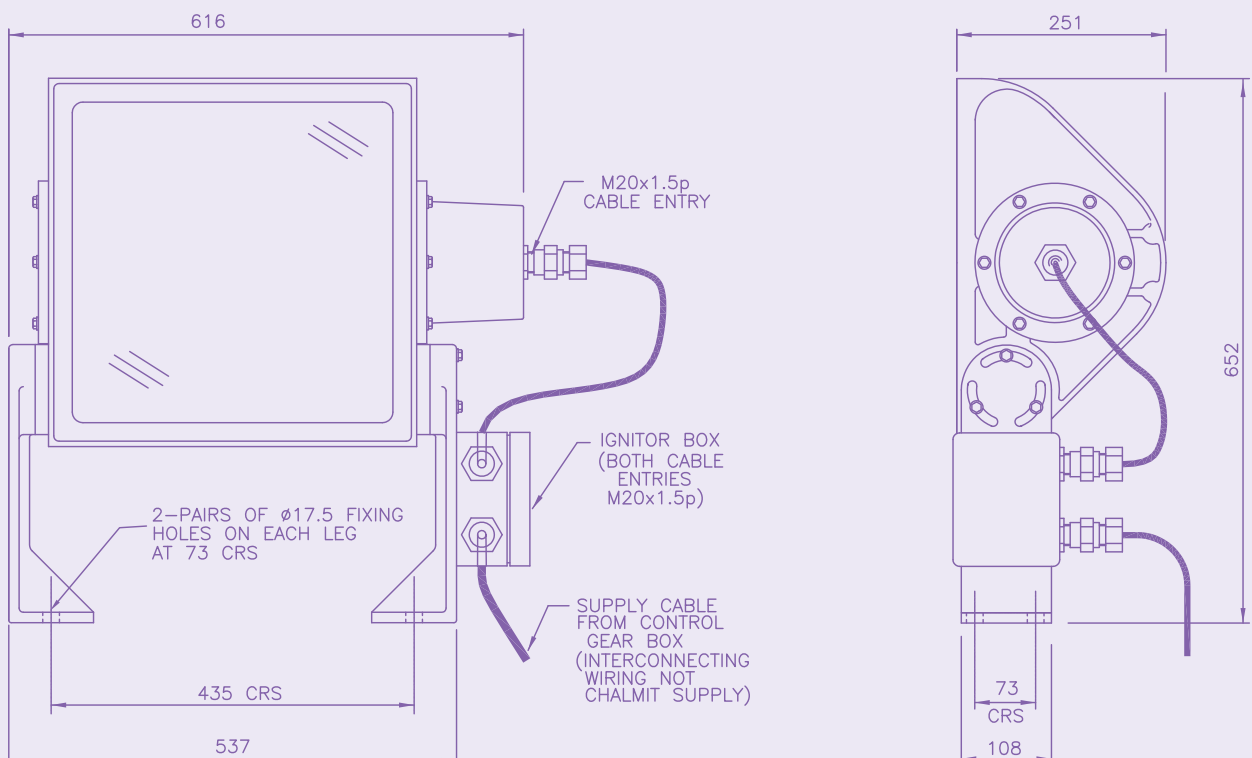
Standard Specification		Features
Type of Protection	Ex nR (Restricted breathing)	Robust construction
Area Classification	Zone 2 areas to EN 60079-10 with installation to EN 60079-14	Highly resistant to corrosion and mechanical damage
Coding	Ex nR II Refer to table for T class and Ambient	All stainless steel fasteners
Enclosure	Marine grade aluminium alloy LM6 body with toughened glass window, silicone rubber gasket	Extremely efficient reflector system
Reflector	Wide beam high purity anodised aluminium	Lamp support mechanism
Entry	1 x M20 cable entry	High ambient applications
Termination	3 core 4mm ² max. conductor	
Installation	Foot mounted	
Windage	0.227m ²	
Control Gear	Refer to Universal gear-box	
Relamping	Access via end cover secured by stainless steel screws	
Burning Position	Universal	
Ingress Protection	IP66/67 to EN 60529	
Electrical Supply	Refer to Universal gear-box for 600W	

Std. Cat No.	Wattage	Lamp	TClass	Ambient °C	Weight
503N/600/HS/IG*	600W	HPS	T3	-40 to +70	25.0kg
503N/1000/TH	1000W	Single Ended T/Halogen	T2	-40 to +60	25.0kg

* Remote gearbox required (see Universal Box).

Options – Suffix to Catalogue No.

/P	PTFE coating	/N	Narrow beam reflector
----	--------------	----	-----------------------



Accessories Should be ordered separately

Catalogue Order Code

Pole mounting bracket assembly (64-114mm pole diameter)	S2000-0007
Swinging jib bracket	S2000-0019
Anti-glare shield	S5030-0007
Wire guard	S5030-0008

Product design and specifications are subject to change without notice, please check the Chalmit website for latest specifications.

