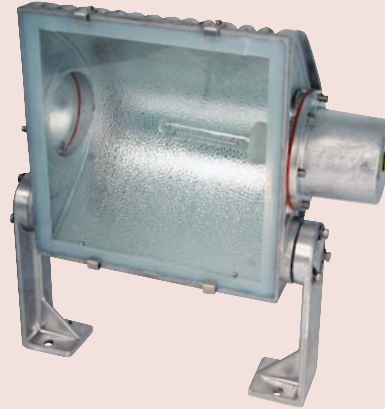




600W HPS



1000W and 2000W versions

The 503 is a high powered floodlight with a wide ambient temperature range. The high upper ambient and corrosion resistant aluminium construction, make the 503 ideal for use even in the hottest and hostile environments.

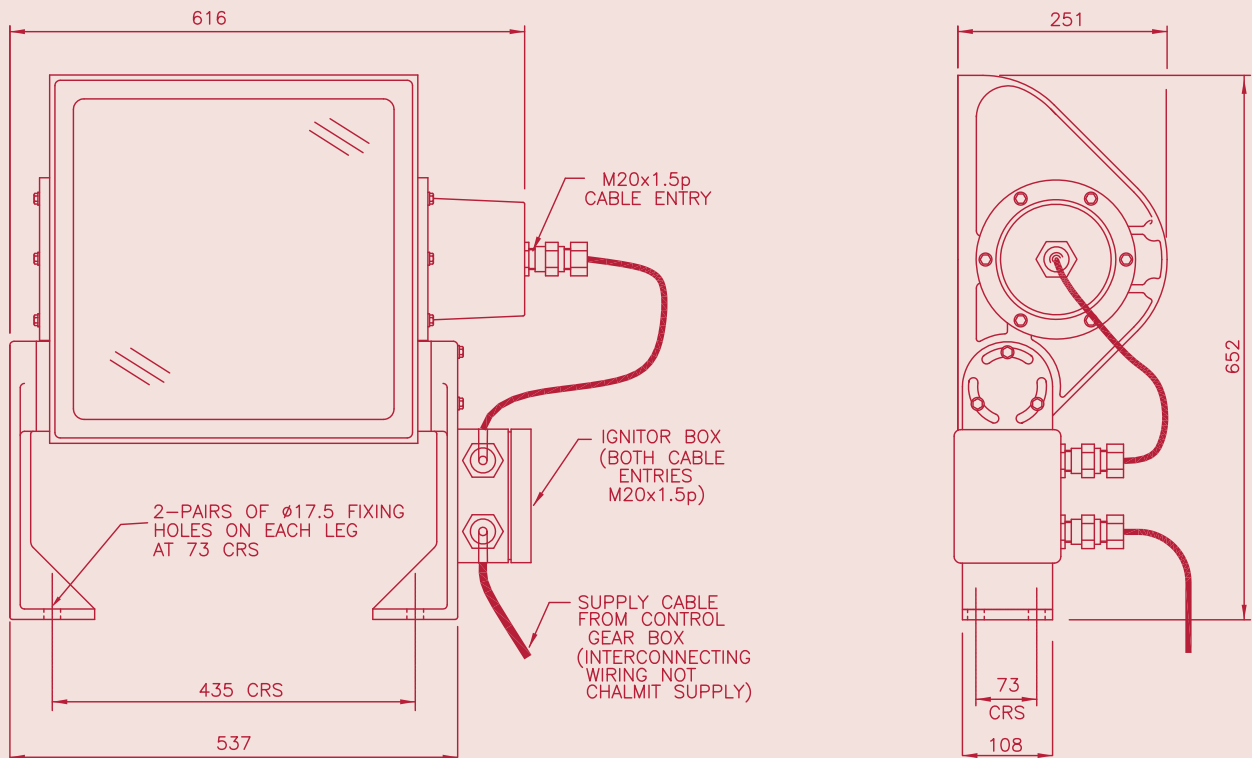
Standard Specification		Features
Ingress Protection	IP66/67 to EN60529	Highly resistant to corrosion and mechanical damage
Enclosure	Marine grade aluminium LM6 alloy body with toughened glass window, silicone rubber gasket	All A4 stainless steel fasteners
Entries	1 x M20 cable entries	High ambient applications
Termination	3 core 4mm <sup>2</sup> max conductors	
Reflector	Wide beam high purity anodised aluminium	
Mounting	Foot mounted	
Windage	0.227m <sup>2</sup>	
Control Gear	Refer to universal control gear box for models with HPS or Metal Halide lamps	
Relamping	Via end cover secured by stainless steel screws	
Electrical Supply	250V Max ac/dc for tungsten halogen lamps	

Std. Cat No.	Wattage	Lamp Type	Lampholder	Weight
503I/600/HS/IG*	600W	HPS	E40	25kg
503I/1000/HS/IG*	1000W	HPS	E40	25kg
503I/1000/MH/IG*	1000W	Metal Halide	E40	25kg
503I/2000/MH/IG*	2000W	Metal Halide	E40	25kg
503I/2000/TH	2000W	Single ended T/Halogen	E40	25kg

\* Remote gearbox required (see Universal Box) or (502 box).

### Options – Suffix to Catalogue No.

/P	PTFE coating	/N	Narrow beam reflector
----	--------------	----	-----------------------



Accessories Should be ordered separately

Catalogue Order Code

Pole mounting bracket assembly (64-114mm pole diameter)	S2000-0007
Swinging jib bracket	S2000-0019
Anti-glare shield	S5030-0007
Wire guard	S5030-0008

Product design and specifications are subject to change without notice, please check the Chalmit website for latest specifications.

